



## Platform Installation Instructions

**IMPORTANT: READ ALL SAFETY INSTRUCTIONS AND WARNINGS PRIOR TO BEGINNING INSTALLATION**

**WARNING:**

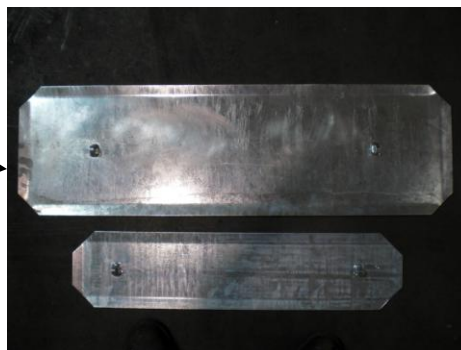
- ♦ Always consult with a licensed architect or structural engineer for proper attachment to each building.
- ♦ Always follow all OSHA safety procedures.
- ♦ Always check all building codes prior to performing any building modification.

**INSTALLERS SHOULD REVIEW ENTIRE INSTALLATION PROCEDURE BEFORE STARTING INSTALLATION!**

This installation procedure is intended for use when mounting LadderPort Platform to a masonry type wall, wood or other strong wall. *Follow a licensed architect or engineer's mounting recommendations for installation of LadderPort equipment on all types of construction.*



Large Roof Base Plate  
Use with 40" Platform Legs



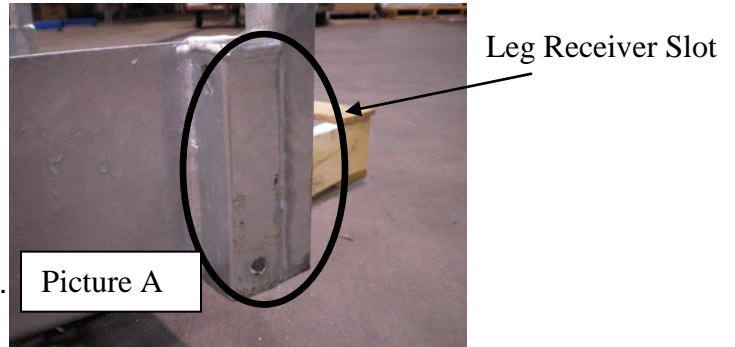
Back Ladder Base Plate

NOTE: It is strongly recommended Back Plates are placed on Rubber Roof Mat to protect roof.

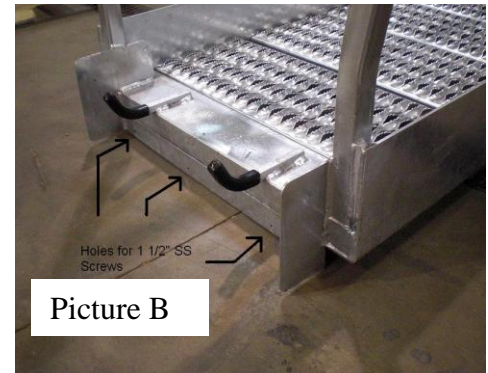
### LadderTech L.L.C.

7081 Dan McGuire Drive • Brighton, Michigan 48116  
Toll Free: (800) 770-8851 • Local: (248) 437-7100 Fax: (248) 486-2600  
Email: [sales@ladderport.com](mailto:sales@ladderport.com) • Web Site: [www.ladderport.com](http://www.ladderport.com)

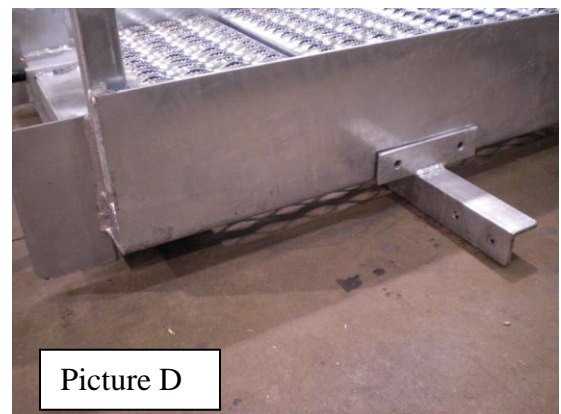
1. Prior to starting installation, review and follow proper OSHA fall protection procedures.(i.e. Harness, lanyard, tie-off, etc.)
2. Before setting unit on roof, measure the height from the top of the parapet to the level roof area where the Platform legs will be placed. Add 4" to this measurement and cut the 40" legs (shipped in the box labeled Back Ladder).
3. Using included two (2) - 5/16 x 2" SS bolts and Nylon lock nuts install the legs to the Large Roof Base Plate.
4. Place on the roof at Platform installation site.
5. Place the main portion of the Platform on the parapet wall edge making sure hooks are facing the outside edge of the building. Slide legs into the Leg Receiver Slots on the sides of the platform. See Picture A below.  
On each side of the Platform drill two level holes using the included 9/32" drill. Install two (2) included 5/16 self tapping bolts, one in each hole.



6. Making sure the Platform is snug to the edge of parapet wall screw in the included three 1 ½ SS screws. Arrow on Picture B indicate approximate placement of screws.



7. See Picture C for the Permanent Support Bracket. This bracket must be attached to the parapet wall BEFORE mounting to the underside of the Platform. See Picture D for mounting position to underside of Platform
8. Using the Permanent Support Bracket shown in Picture C mount the angle support to the parapet wall using the supplied 1 ½ SS Screws and then secure the support angle to the platform use the 9/32 drill and 5/16 self-tapping screws.



**LadderTech L.L.C.**



Back Ladder

9. Bolt Back Ladder to Platform using the supplied 5/16 bolts and nylock nuts. Make sure excess bolt is to the outside to avoid trip hazard.
10. Mount Back Ladder adjustable legs on Smaller Base Plate assembly using 5/16 bolts and nylock nuts.
11. Slip legs into main Back Ladder side supports.
12. Adjust telescoping legs so stair treads are level when weight is put on Back Ladder. Once treads are level, drill through telescoping legs in existing lower mounting holes of main side rails. Place supplied 5/16 SS bolts and nylock washers and tighten.
13. After installation of Back Ladder is complete check Platform and attached Back Ladder for rigidity, which is critical for safety. Snug all bolts – do not over tighten.

### Included Assembly Kit for Platform and Back Ladder

# of Items	Description of Items Included in Assembly Kit
10	1 1/2" Screws
10	2" SS Bolts
10	2" Nylon lock nuts
1	5/16" Drill Bit
1	9/32" Drill Bit
6	5/16" Self Tapping Bolts
4	2 1/2" 5/16" SS Bolts
8	5/16" SS Washers
Kit May Contain Extra Parts	

Installers should always verify that mounting surfaces are strong enough to hold Platform weight + the weight of a person carrying tools. It is recommended installers carry pressure treated wood for installation under platform to distribute weight. Platforms cannot be installed directly on conduit, wiring or other obstacles that may exist on top of mounting surface.

For Installation Questions or Additional Orders:

Call 800-770-8851

Monday – Friday / 8:00 AM to 5:00 PM EST or e-mail us at [sales@ladderport.com](mailto:sales@ladderport.com).

LadderDock should not be used for anything other than its intended purposes.

Always check state and local building codes prior to installation on any building

### LadderTech L.L.C.

7081 Dan McGuire Drive • Brighton, Michigan 48116

Toll Free: (800) 770-8851 • Local: (248) 437-7100 Fax: (248) 486-2600

Email: [sales@ladderport.com](mailto:sales@ladderport.com) • Web Site: [www.ladderport.com](http://www.ladderport.com)



## WARRANTY AND RETURN POLICY

### WARRANTY

LadderTech, LLC (hereinafter referred to as LadderTech) guarantees our products are free of defects in workmanship and material. Such warranty is in effect for one year from date of purchase. Warranty excludes minor defects in material coatings (i.e. galvanizing, powder coating and other like coatings).

In the unlikely event, a defective product is shipped LadderTech must be notified in writing immediately upon receipt of receiving the defective product. If notification of receipt of defective product is not received within 30 days of receipt of product, LadderTech reserves the right to void the warranty. If, in the sole opinion of LadderTech the product is determined to be defective, LadderTech's obligation is limited to replacement of the defective product with a like product of equal or greater value.

LadderTech products must not have been subject to accident; misuse, abuse or use contrary to the instructions provided in the instruction manuals or contrary to the reasonable intended use of the products. This warranty covers only defects arising from the workmanship, construction and material involved in the manufacturing of the product. This warranty does not cover defects arising from deterioration due to normal wear and tear, the use of the product in a manner other than as instructed in the installation manual or modification of product, design, improper installation, neglect, lack of routine maintenance or unauthorized repairs. LadderTech assumes no responsibility or has no control over nicks, cuts, scratches or any other normal wear and tear during any consumer's usage. Incidental, indirect, special, or consequential damages are excluded in this warranty. Any determination by LadderTech with respect to such matters shall be final.

LadderTech makes no other warranty, expressed or implied, to the merchantability, fitness for a particular purpose, design, sale, installation, or use, of our products; and shall not be liable for incidental or consequential damages, losses of or expenses, resulting from the use of our products. Many states and localities have codes and regulations governing sales, construction, installation, and/or use of products for certain purposes, which may vary from those in neighboring areas. While LadderTech attempts to assure that its products comply with such codes, it cannot guarantee compliance, and cannot be responsible for how the product is installed or used. Before purchase and use of a product, please review the product application, and national and local codes and regulations, to be sure that the product, installation, and use will comply with them.

LadderTech accepts no responsibility for actions caused by improper use of our products or for use other than its intended purpose. It is user's responsibility to inspect product for usability, stability, and complete routine inspections and maintenance on an ongoing basis. Although every effort has been made to use the longest lasting fittings and installation materials, as with all metal products, over time, screws, bolts, etc. corrode, loosen and rust and must be routinely inspected and maintained, which includes but is not limited to tightening, repair or replacement as necessary.

EXCEPT TO THE EXTENT PROHIBITED BY APPLICABLE LAW, NO OTHER WARRANTIES OR CONDITIONS, WHETHER EXPRESS OR IMPLIED, WRITTEN OR ORAL, INCLUDING WARRANTIES OF MERCHANTABILITY AND FITNESS FOR A PARTICULAR PURPOSE, SHALL APPLY TO LadderTech PRODUCTS; UNDER NO CIRCUMSTANCES SHALL LadderTech, LLC BE LIABLE FOR SPECIAL, INDIRECT, INCIDENTAL OR CONSEQUENTIAL DAMAGES SUSTAINED IN CONNECTION WITH OUR PRODUCTS AND LadderTech, LLC NEITHER ASSUMES NOR AUTHORIZES ANY REPRESENTATIVE OR OTHER PERSON TO ASSUME FOR IT ANY OBLIGATION OR LIABILITY OTHER THAN SUCH AS IS EXPRESSLY SET FORTH HEREIN. THIS WARRANTY GIVES A PURCHASER OF LadderTech, LLC PRODUCTS SPECIFIC LEGAL RIGHTS, WHICH MAY VARY FROM PROVINCE TO PROVINCE, AND STATE TO STATE.

### RETURNS

Upon inspection, returns that are deemed resalable are subject to a 25% restocking fee. No returns accepted on used, special order or custom built items. Returns must be made within 30 days of INVOICE date to be eligible for any refund. No credit will be given for returns that are determined not to be resalable. Any determination by LadderTech, LLC with respect to such matters shall be final. Buyer is responsible for *all* freight charges.

### LadderTech L.L.C.

7081 Dan McGuire Drive • Brighton, Michigan 48116  
Toll Free: (800) 770-8851 • Local: (248) 437-7100 Fax: (248) 486-2600  
Email: [sales@ladderport.com](mailto:sales@ladderport.com) • Web Site: [www.ladderport.com](http://www.ladderport.com)